



105 Seafeld Rows,
Seafeld EH47 7AW
Offers Over £137,500

Caesar & Howie
Solicitors & Estate Agents



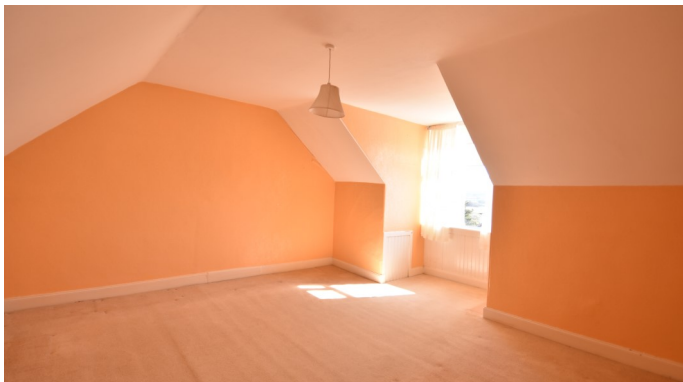
105 Seafield Rows

Seafield Bathgate EH47 7AW

Spacious end terraced cottage style dwelling in central and sought after community. The property has excellent size rooms throughout and holds great potential for modernisation and improvements. Adjacent, there is a sizable and attractive garden, garage and walled patio enclosure. From the upper floor bedrooms, it enjoys superb over views over countryside to the south. It is ideally placed for primary school, local village shop, amenities and public transport. Easy driving distance of major towns such as Bathgate and Livingston. Early/flexible entry available. Chain free.

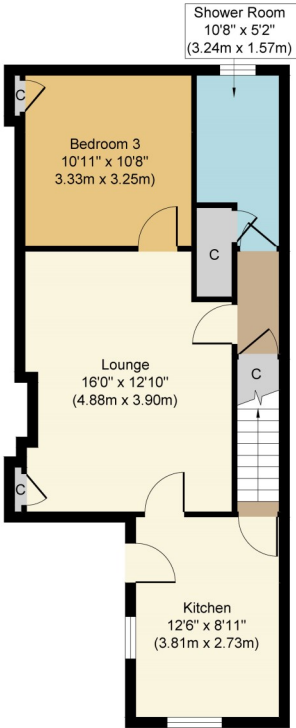
- Kitchen
- Lounge
- Shower room
- Bedroom
- Upper floor
- Two large double bedrooms
- GCH & DG
- Garage
- Sizable garden
- South facing views
- Council Tax Band B



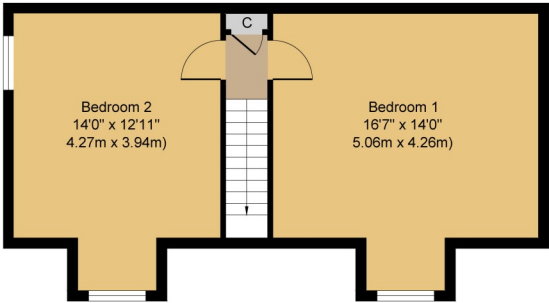


105 Seafield Rows

105 Seafield Rows



Ground Floor
Approximate Floor Area
547 sq. ft
(50.86 sq. m)



First Floor
Approximate Floor Area
492 sq. ft
(45.70 sq. m)

Whilst every attempt has been made to ensure the accuracy of the floor plan contained here, measurements of doors, windows, rooms and any other items are approximate and no responsibility is taken for any error, omission, or mis-statement. The measurements should not be relied upon for valuation, transaction and/or funding purposes. This plan is for illustrative purposes only and should be used as such by any prospective purchaser or tenant. The services, systems and appliances shown have not been tested and no guarantee as to their operability or efficiency can be given.

Copyright V360 Ltd 2025 | www.houseviz.com